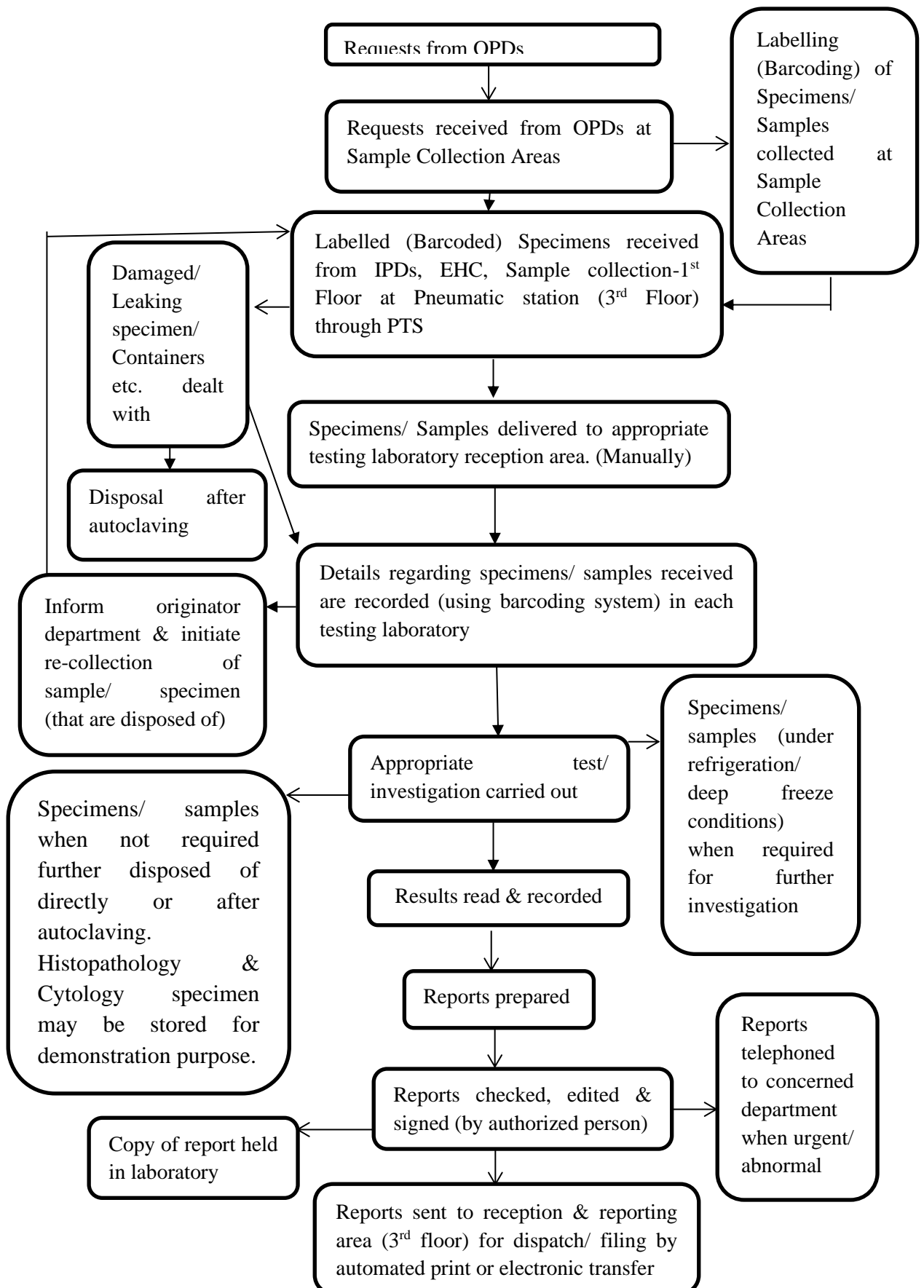
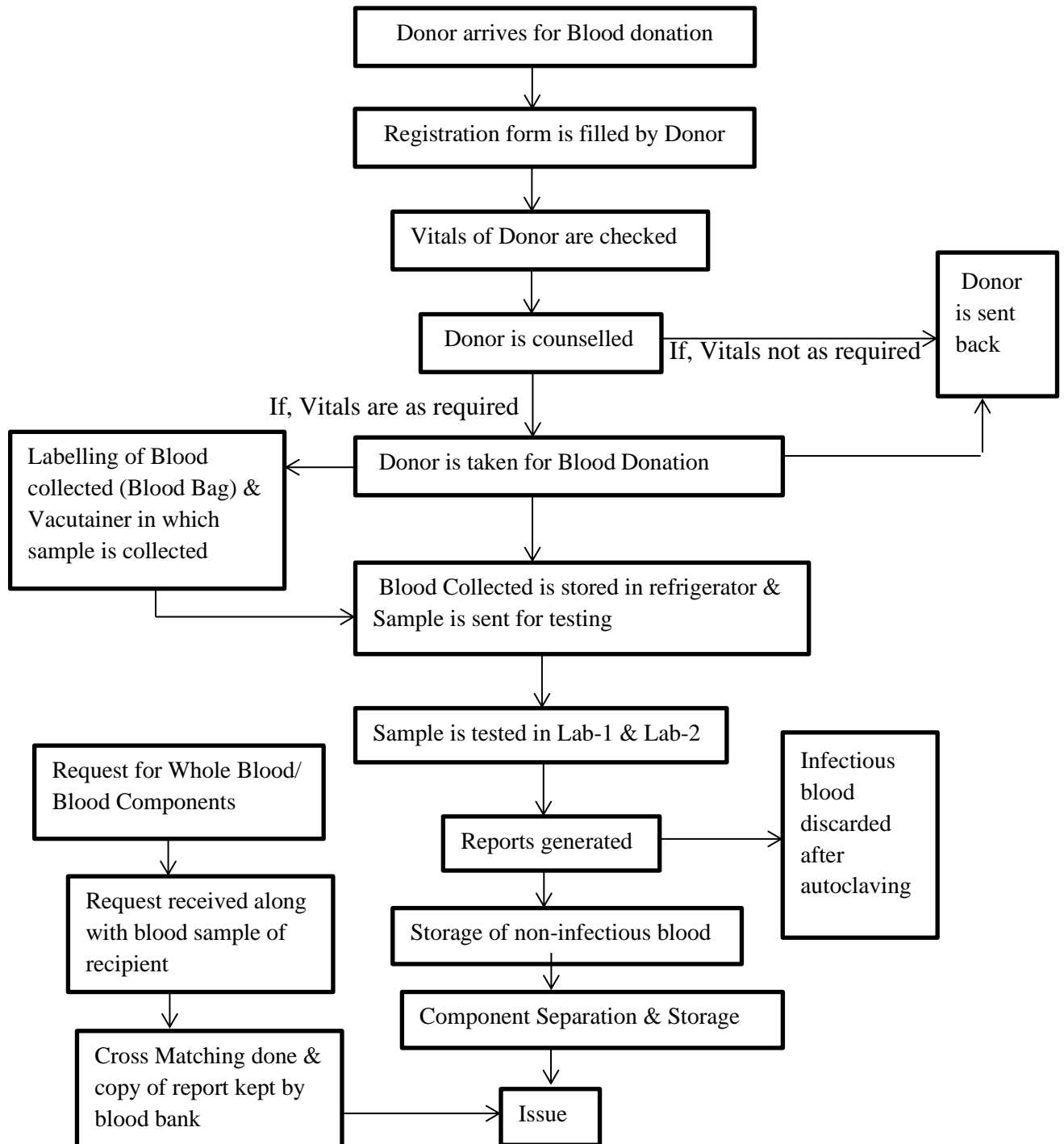


## Process Flow of Laboratories:

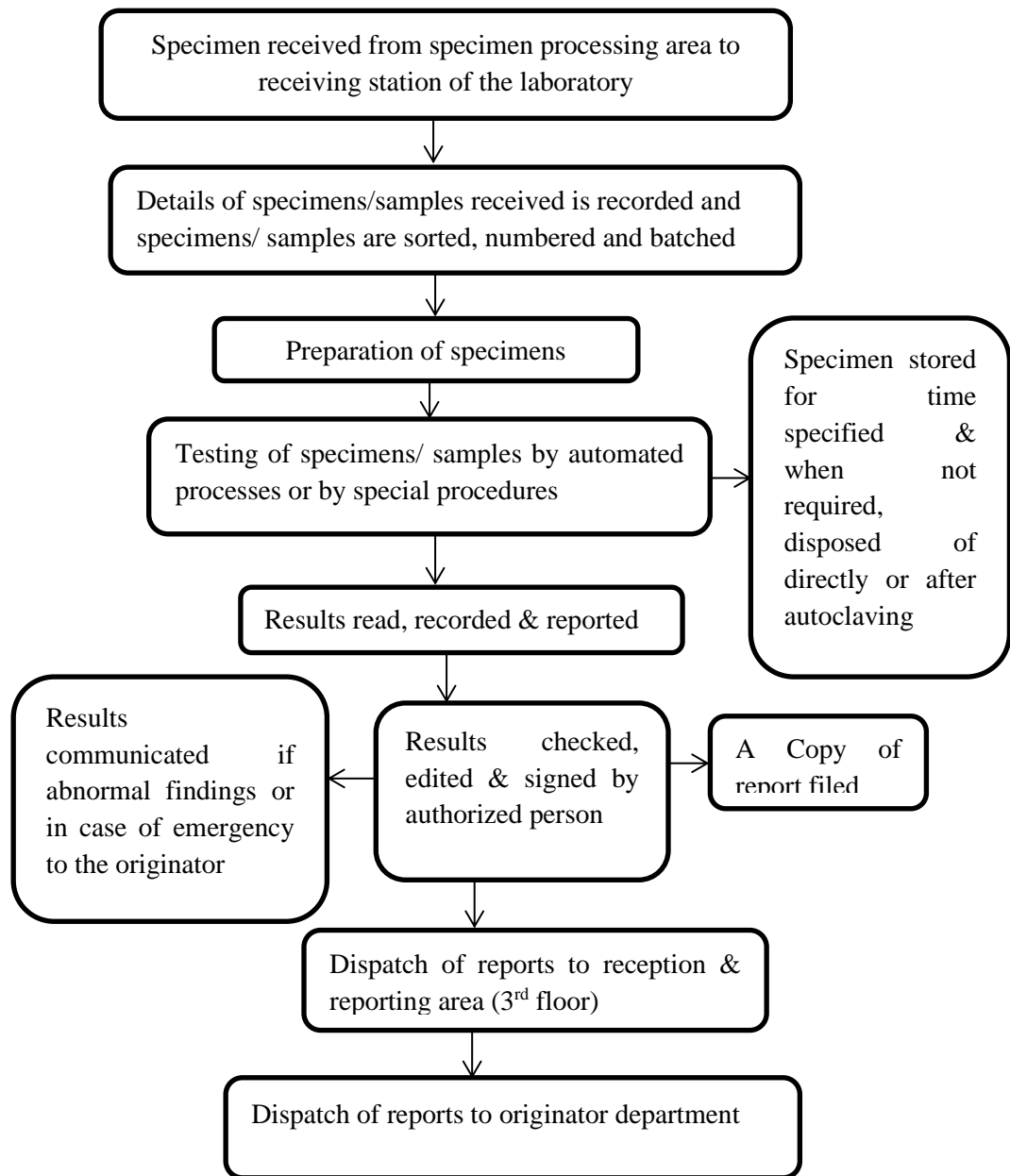
### 1) Flow of requests, specimen & reports



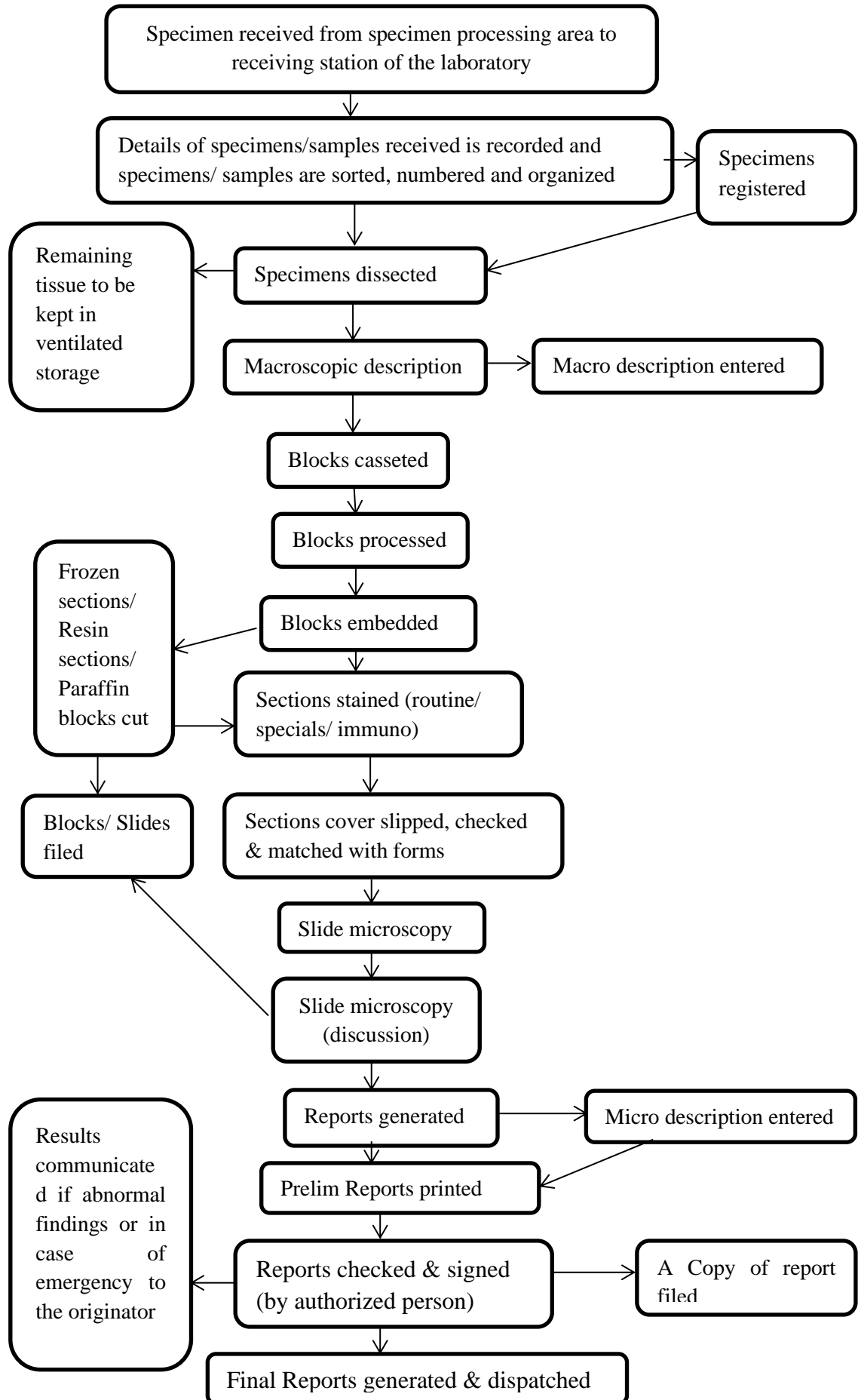
## 2) Workflow of Blood Bank



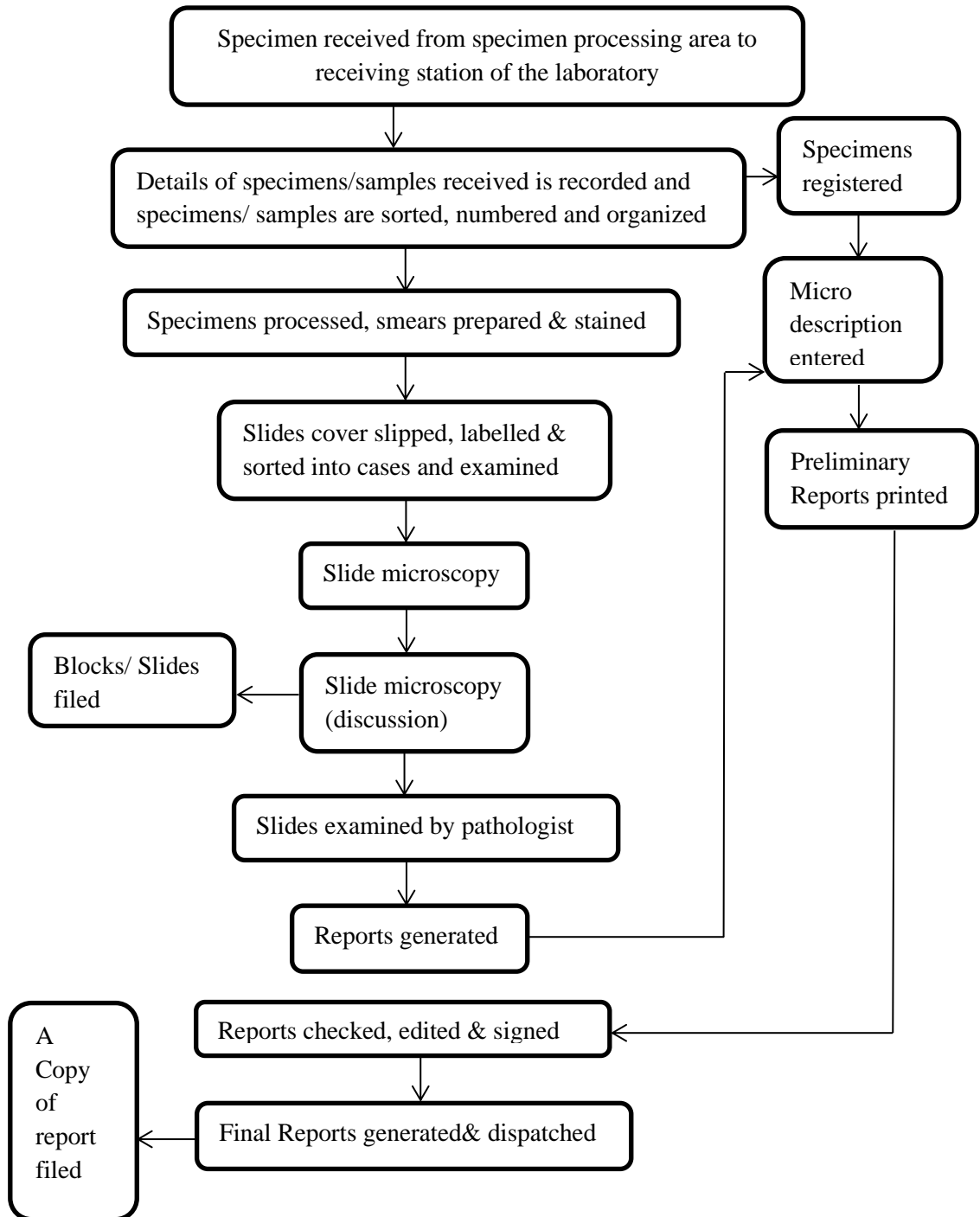
3) Workflow of Biochemistry lab, Pathology lab, Haematology lab



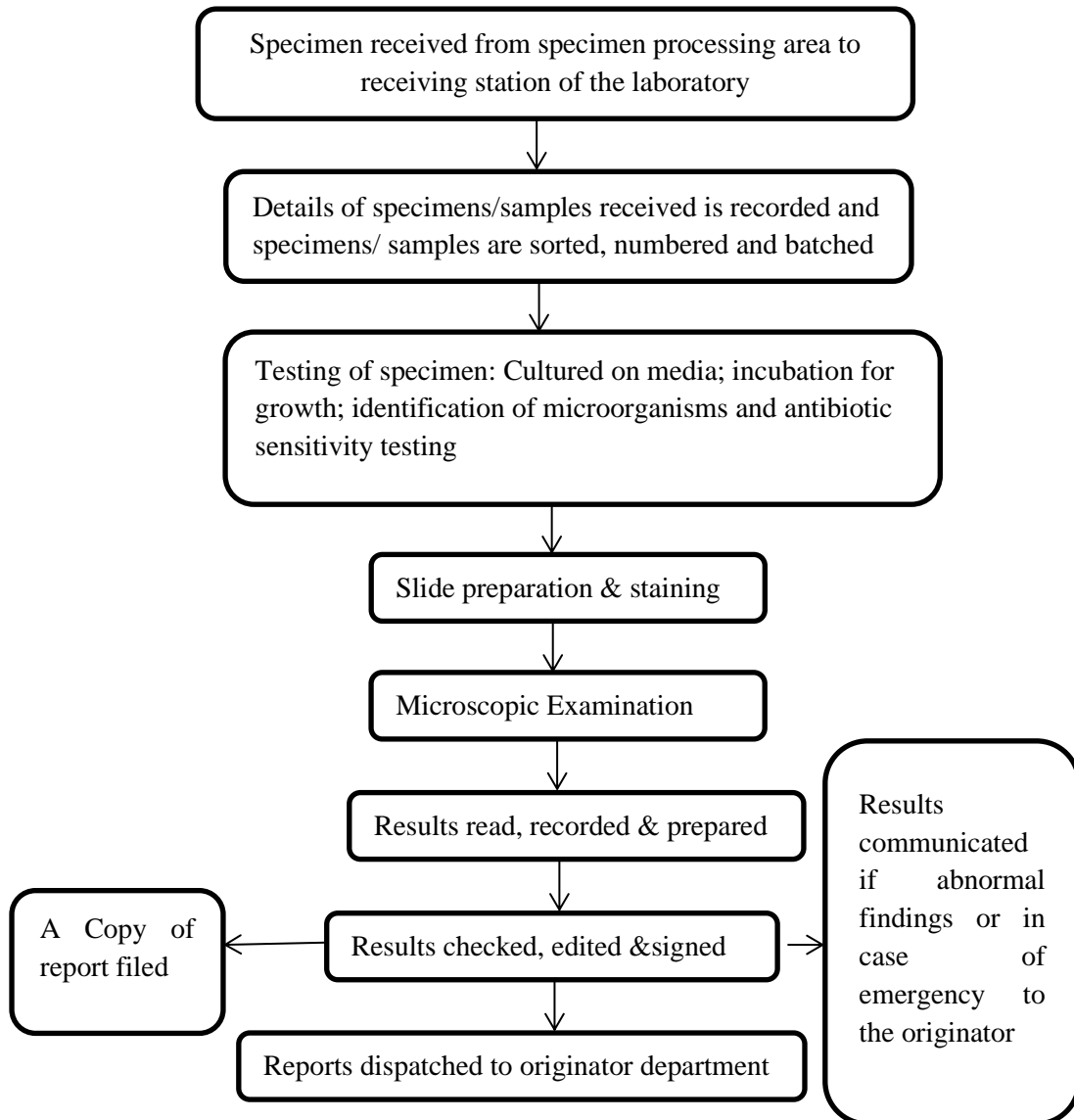
#### 4) Workflow of Histopathology lab



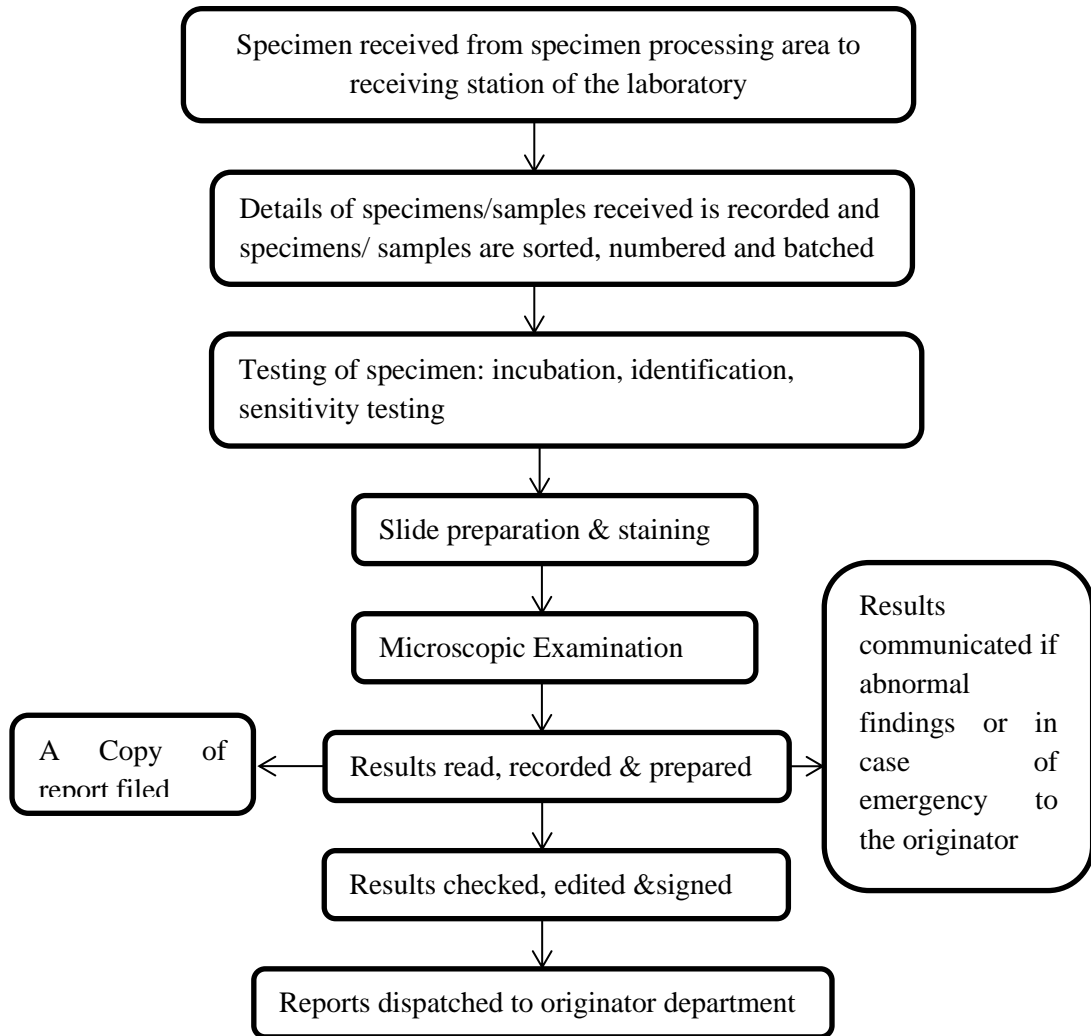
5) Workflow of cytopathology lab



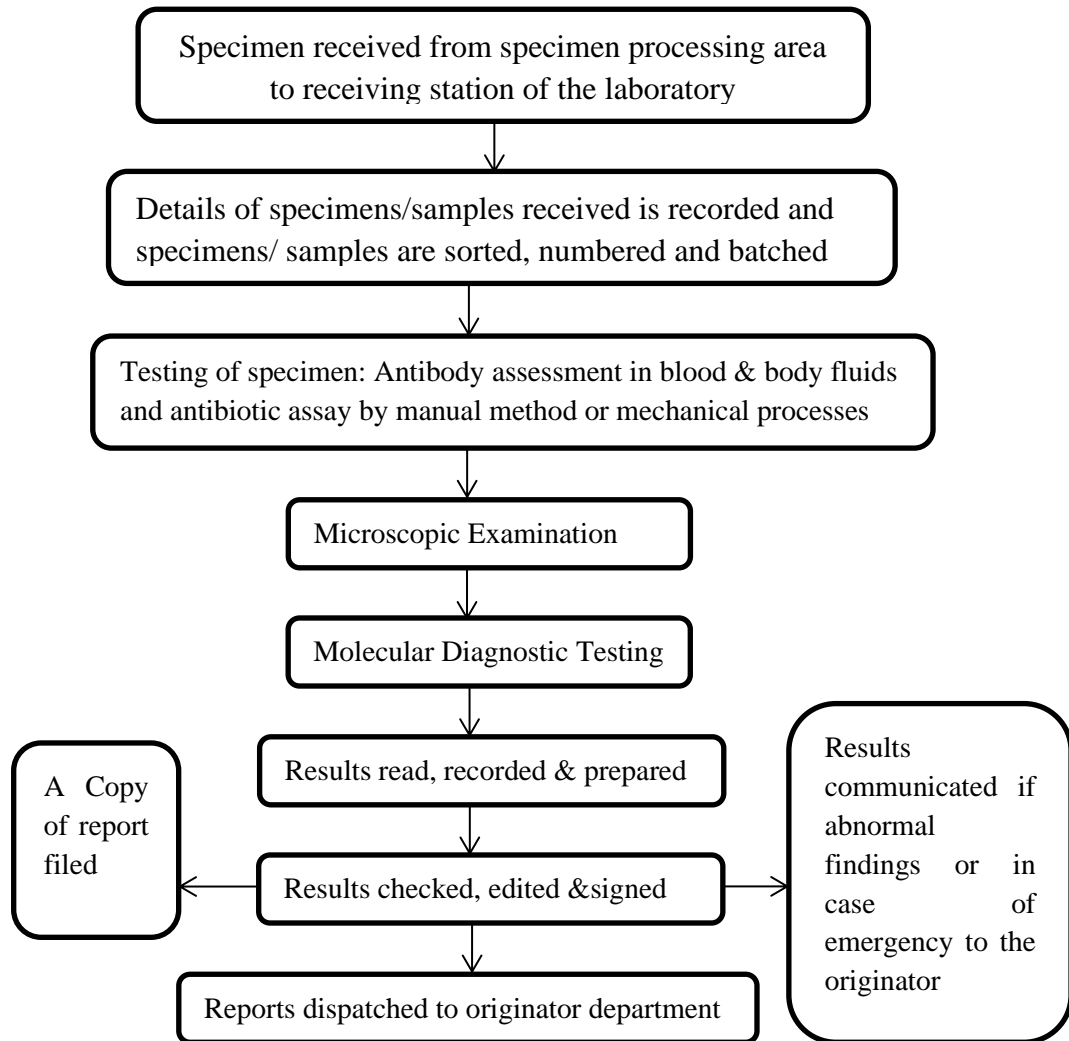
6) Workflow of Microbiology Lab



7) Workflow of Bacteriology Lab



8) Workflow of Serology Lab





9) Workflow of Media Room

